



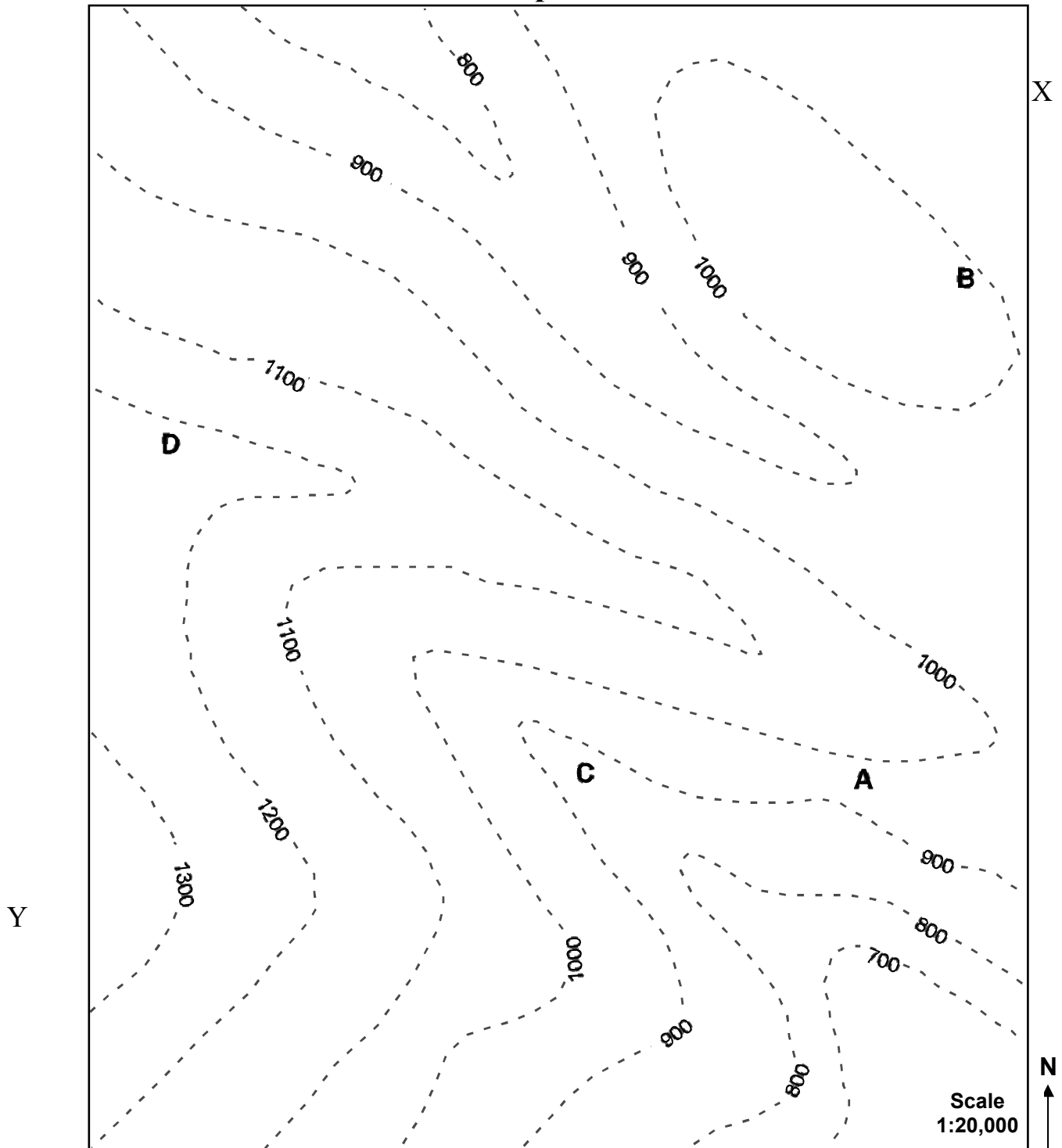
# Central Department of Geology Tribhuvan University

Kirtipur, Kathmandu

Date .....

Structural Geology Practical

## Map 2



In the given area, the lower trace of hematite bed outcrop at A, B, and C. Its upper trace is met with D at a depth of 300 m. the hematite bed forms a part of a conformable series with conglomerate at the base, and sandstone 200 m thick, underlying the youngest limestone bed of the series. Determine the dip and the thickness of the hematite bed and complete the outcrop. Colour the beds as follows: limestone – yellow, hematite – red, sandstone – orange and conglomerate – purple. Draw cross section along the line XY.